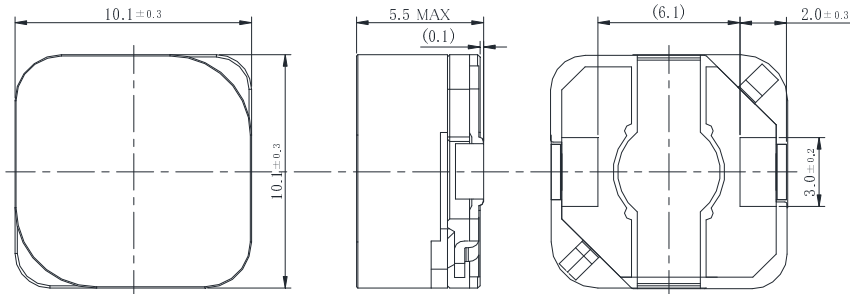
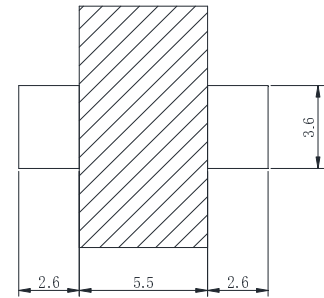


# Shield High Power Inductor SHP1055P Series

## DIMENSIONS / 外形寸法



## Recommended patterns 推奨パターン図



(Unit: mm)

## FEATURES / 特長

- ・ Low leakage flux to the outside by complete closed magnetic circuit structure.
- ・ 完全閉磁路構造により漏れ磁束が少ない
- ・ Correspond to large saturation current by high Bm Ni-Zn ferrite core.
- ・ 高B材Ni-Zn系フェライトコアによる高飽和電流対応

## SPECIFICATIONS / 仕様

Parts No. 部品番号	Inductance *1 インダクタンス [ $\mu$ H]	Tolerance 許容差 [%]	DC Resistance *2 直流抵抗 [m $\Omega$ ]	DC Resistance Max *2 最大直流 抵抗[m $\Omega$ ]	DC Superimposition Current *3 直流重畳 許容電流 [A]	Temperature Rise Current *4 温度上昇 許容電流 [A]
SHP1055P-F3R3AP	3.3	±30%	11	14	9.60	7.20
SHP1055P-F4R7AP	4.7	±30%	16	18	8.70	5.80
SHP1055P-F5R6AP	5.6	±30%	18	20	8.30	5.70
SHP1055P-F6R8AP	6.8	±30%	21	23	7.60	5.10
SHP1055P-F8R2AP	8.2	±30%	26	30	6.90	4.70
SHP1055P-F100AP	10	±20%	34	39	6.20	4.00
SHP1055P-F120AP	12	±20%	35	41	5.80	3.80
SHP1055P-F150AP	15	±20%	43	48	4.90	3.50
SHP1055P-F180AP	18	±20%	47	51	4.50	3.40
SHP1055P-F220AP	22	±20%	55	59	4.20	3.30
SHP1055P-F330AP	33	±20%	83	101	3.10	2.70
SHP1055P-F470AP	47	±20%	118	132	2.90	2.00
SHP1055P-F560AP	56	±20%	137	158	2.60	1.80
SHP1055P-F680AP	68	±20%	160	169	2.30	1.70
SHP1055P-F820AP	82	±20%	184	190	1.90	1.60
SHP1055P-F101AP	100	±20%	219	233	1.80	1.50
SHP1055P-F121AP	120	±20%	297	338	1.60	1.40
SHP1055P-F151AP	150	±20%	322	366	1.40	1.20
SHP1055P-F181AP	180	±20%	366	416	1.30	1.10
SHP1055P-F221AP	220	±20%	486	574	1.10	1.00
SHP1055P-F331AP	330	±20%	774	867	1.00	0.70
SHP1055P-F471AP	470	±20%	1083	1318	0.80	0.60

\*1 Inductance is measured at 100kHz, 1V .

\*2 DC Resistance is measured at ambient temperature 25°C.

\*3 DC Current based upon 30% inductance reduction from the initial value.

\*4 DC Current based upon 35°C temperature rise.

\*5 Operating temperature is -40~125°C(includes coil heating).

インダクタンス測定、100kHz、1V.

直流抵抗は周囲温度25°Cにおいて測定.

インダクタンスが初期値より30%になる直流電流値.

温度上昇 $\Delta T=35^\circ\text{C}$ になる直流電流値.

動作温度、-40~125°C(コイルの発熱を含む) .