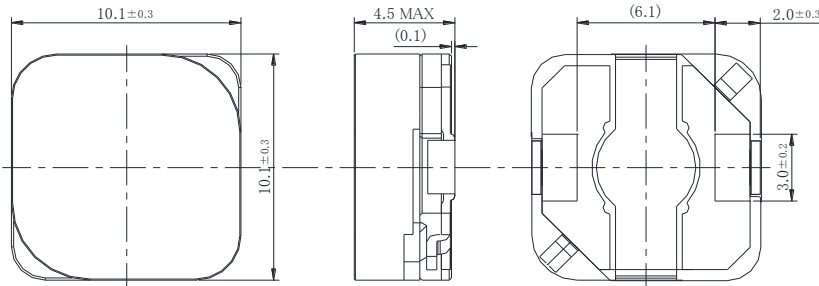
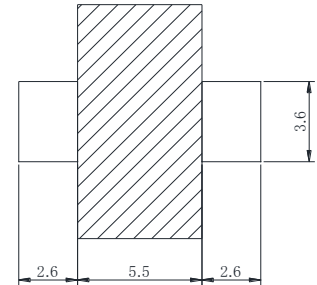


Shield High Power Inductor SHP1045P Series

DIMENSIONS / 外形寸法



Recommended patterns 推奨パターン図



(Unit: mm)

FEATURES / 特長

- ・ Low leakage flux to the outside by complete closed magnetic circuit structure.
- ・ Correspond to large saturation current by high Bm Ni-Zn ferrite core.
- ・ 完全閉磁路構造により漏れ磁束が少ない
- ・ 高B材Ni-Zn系フェライトコアによる高飽和電流対応

SPECIFICATIONS / 仕様

Parts No. 部品番号	Inductance *1 インダクタンス [μH]	Tolerance 許容差 [%]	DC Resistance *2 直流抵抗 [mΩ]	DC Resistance Max *2 最大直流 抵抗[mΩ]	DC Superimposition Current *3 直流重畳 許容電流 [A]	Temperature Rise Current *4 温度上昇 許容電流 [A]
SHP1045P-F3R3AP	3.3	±30%	15	18	8.50	6.10
SHP1045P-F4R7AP	4.7	±30%	18	22	6.30	5.50
SHP1045P-F5R6AP	5.6	±30%	23	27	5.90	5.10
SHP1045P-F6R8AP	6.8	±30%	22	29	5.60	4.70
SHP1045P-F8R2AP	8.2	±30%	29	36	5.20	4.00
SHP1045P-F100AP	10	±20%	33	42	4.90	3.60
SHP1045P-F120AP	12	±20%	37	43	4.70	3.40
SHP1045P-F150AP	15	±20%	53	65	4.10	3.20
SHP1045P-F180AP	18	±20%	57	66	3.40	3.00
SHP1045P-F220AP	22	±20%	75	89	3.30	2.90
SHP1045P-F330AP	33	±20%	122	159	2.70	2.20
SHP1045P-F470AP	47	±20%	162	196	2.40	1.90
SHP1045P-F560AP	56	±20%	188	215	2.20	1.50
SHP1045P-F680AP	68	±20%	212	242	2.00	1.40
SHP1045P-F820AP	82	±20%	228	265	1.80	1.30
SHP1045P-F101AP	100	±20%	354	414	1.50	1.20
SHP1045P-F121AP	120	±20%	395	472	1.40	1.00
SHP1045P-F151AP	150	±20%	470	575	1.30	0.90
SHP1045P-F181AP	180	±20%	525	633	1.20	0.80
SHP1045P-F221AP	220	±20%	707	874	1.00	0.70
SHP1045P-F331AP	330	±20%	1085	1300	0.80	0.60
SHP1045P-F471AP	470	±20%	1621	1716	0.70	0.50

*1 Inductance is measured at 100kHz, 1V .

*2 DC Resistance is measured at ambient temperature 20°C.

*3 DC Current based upon 30% inductance reduction from the inithal value (Ta=20°C)

*4 DC Current based upon 35°C temperature rise. (Ta=20°C)

*5 Operating temperature is -40~125°C(includes coil heating).

インダクタンス測定、100kHz、1V.

直流抵抗は周囲温度20°Cにおいて測定.

インダクタンスが初期値より-30%になる直流電流値(Ta=20°C)

温度上昇ΔT=35°Cになる直流電流値(Ta=20°C)

動作温度、-40~125°C(コイルの発熱を含む) .